

INTERNATIONAL ENTERPRISE CLASS RULE No.1

OBJECT OF THE CLASS RULES

this is a one design class. The Rules, Plans, and Specifications are intended to ensure that in the hull form, weight, scantings, sail colour, deck plan, the boats are as nearly alike as possible with variations in cockpit layout and fittings as alternatives on lists and plans. All boats shall be built according to the plans and rules in all respects.

PRINCIPAL DIMENSIONS (SEE RULE 19)

Main (Full Rig)
 Luff 5985mm
 Quarter width 2330 mm
 Half width 1770 mm
 Three quarter width 1010mm
 Leech points are found by folding leech in half and then in quarters. These points will also be the batten points ±50mm.
 Length of top batten outside 650mm
 Length of top batten pocket outside 650mm

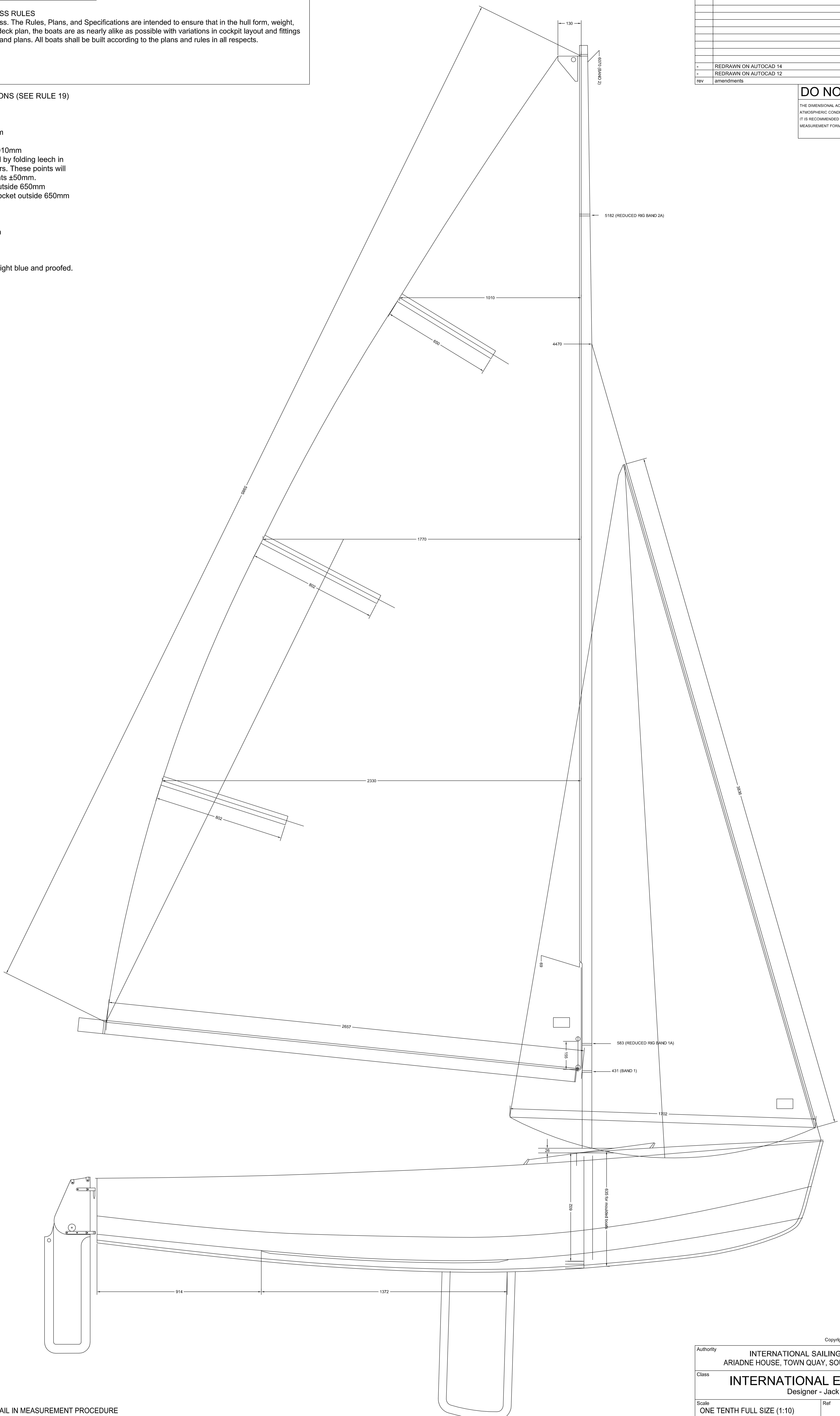
Jib (Full Rig)
 Luff length 3836mm
 Leach length 3684 mm
 Foot Median 3861mm
 Foot length 1702mm

Sails must be in dyed light blue and proofed.

-	REDRAWN ON AUTOCAD 14	SRD	JAN 2000	RG
-	REDRAWN ON AUTOCAD 12	RJR	NOV 1995	-
rev	amendments	by	date	auth

DO NOT SCALE

THE DIMENSIONAL ACCURACY OF THIS PRINT MAY VARY DUE TO ATMOSPHERIC CONDITIONS AND REPRODUCTION METHODS. IT IS RECOMMENDED THAT FORMERS ARE CHECKED AGAINST THE MEASUREMENT FORM BEFORE COMMENCING CONSTRUCTION.



BILGE KEEL SEE DETAIL IN MEASUREMENT PROCEDURE (YEAR BOOK 1999 PAGE 82)

Copyright © **Final Issue 12/01/01**

Authority	INTERNATIONAL SAILING FEDERATION ARIADNE HOUSE, TOWN QUAY, SOUTHAMPTON, SO14 2AQ		
Class	INTERNATIONAL ENTERPRISE Designer - Jack Holt		
Scale	ONE TENTH FULL SIZE (1:10)	Ref	SHEET 9
Rev		Rev	
Title	SAIL PLAN-CRITICAL DIMENSIONS		