

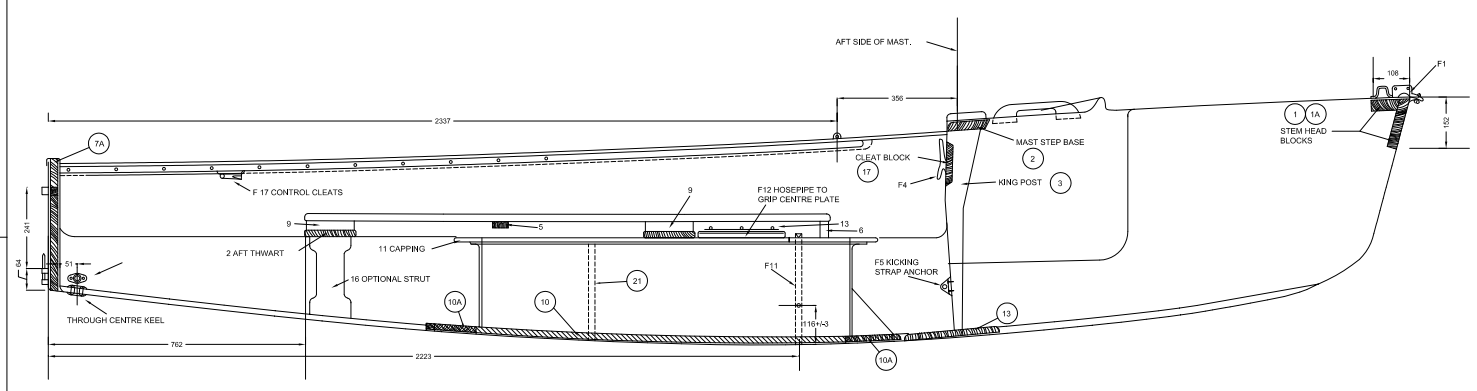
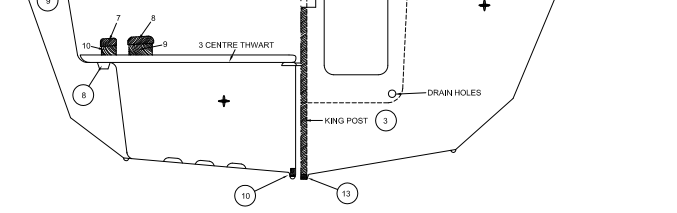
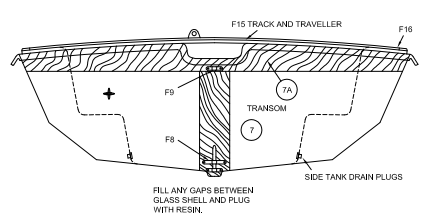
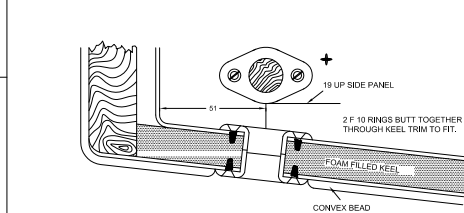
WOOD PARTS TO FINISH GLASS HULL				
ITEM No.	NAME	NO. REQD.	FINISHED SIZE	BEFORE SHIPING
1	MAST STEP	1	102 x 102 x 22	as used
2	AFT THWART	1	1086 x 166 x 22	
3	FORE THWART	2	591 x 166 x 22	
4	HAND GRIP	2	2515 x 22 x 19	
5	SEAT CLEATS	2	152 x 44 x 22	
6	SEAT BRACKETS	2	203 x 51 x 22	
7	SIDE SEATS	2	1575 x 152 x 10	as used boat shell
8	SEAT BLOCKS	2	1575 x 203 x 22	
9	SEAT BLOCKS	4	140 x 70 x 29	
10	SEAT BLOCKS	4	140 x 44 x 17	
11	PLATE CASE CAPPING	1	1194 x 114	as used
12	GUNWALE STIFFENERS	2	991 x 32 x 17	as used
13	TOE STRAP BLOCK	1	152 x 51 x 38	
14	TOE STRAP BLOCK	2	16 x 51 x 22	
15	HANDLES (OPTIONAL)	2	254 x 54 x 22	as used boat shell
16	STRUT (OPTIONAL)	1	260 x 108 x 19	

SCREWS	
1	4 38 (1½) x No. 10
2	4 38 (1½) x No. 10
3	4 38 (1½) x No. 10, 6x64 (2½) x No. 10
4	32 38 (1½) x No. 8
5	4 38 (1½) x No. 10
6	2 64 (2½) x No. 10
7	2 32 (1¼) x No. 10, 8 x 57 (2¼) x No. 10
8	4 38 (1½) x No. 10, 8 x 64 (2½) x No. 10
11	12 44 (1¾) x No. 10
12	
13	3 38 (1½) x No. 10
14	4 38 (1½) x No. 10
15	4 76 (3) x No. 10, 4 x 44 (1¾) x No. 10

RINGED NUMBERS REFER TO WOOD PARTS BONDED INTO HULL - SEE SHEET 11.

ACCESSORIES TO FIT OUT BOAT AS WOODEN ENTERPRISE	
1	MAST COMPLETE wood (sheet 8) or metal, rules 15, 15, 16
2	BOOM "
3	JOB STICK rule 18H(1)
4	CENTRE BOARD as sheet 7
5	Rudder BLADE as sheet 6 and rule 12
6	Rudder STOCK " " " " " (Optional)
7	TILLER rule 13
8	MAINSHEET see sheet 8
9	FORESHEET " " " "
10	KICKING STRAP design optional

FITTINGS FOR HULL (FASTENING TO SUIT FITTING)	
F1	BOW PLATE
F2	SHROUD PLATES
F3	SHEET LEADS rule 18B (10)
F4	HALLIARD CLEATS
F5	ANCHOR PLATE
F6	SHROUD PLATE COVERS
F7	TOE STRAP PLATES
F8	TRANSCOM PINTLE
F9	GUDGEON
F10	DRAIN PLUGS (self tapping screws)
F11	PLATE BOLT STIRRUP (or bolt)
F12	PLATE FRICTION HOSE, 254 x 22 dia. or as used in wooden
F13	" " " " BRASS BAR 203 (long boat, sheet 7
F14	TOE STRAP 3660 x 51
F15	SHEET TRACK AND TRAVELLER 1067 (long
F16	" " " " STOPS
F17	TUBULAR CLEATS
F18	CONTROL LEADS
F19	Y PLATES (self tapping screws)
F20	KEEL BANDS 1118 " " " "
F21	SLOT RUBBER 1170 x 27



Where this symbol is shown the drawing associated with it is a sketch and therefore is NOT to scale (N.T.S.)

**DO NOT SCALE**  
 THE DIMENSIONAL ACCURACY OF THIS PRINT MAY VARY DUE TO ATMOSPHERIC CONDITIONS AND REPRODUCTION METHODS.  
 IT IS RECOMMENDED THAT FORMERS ARE CHECKED AGAINST THE MEASUREMENT FORM BEFORE COMMENCING CONSTRUCTION.

THE CURRENT BUILDING FEE MUST BE PAID TO I.S.A.F. IN RESPECT OF EACH BOAT. PART BUILT BOAT OR ONLY PARTS, AS SOON AS THE KEEL IS LAID.  
 THE REGISTERED NUMBER OF THE BOAT IS ISSUED BY THE I.S.A.F. AND THE NAME AND ADDRESS OF THE OWNER MUST BE SENT TO THE I.S.A.F.

THE INTERNATIONAL ENTERPRISE SAILING GINGHY PLANS MUST NOT BE COPIED.  
 ALL ENQUIRIES MUST BE SENT TO THE SECRETARY, INTERNATIONAL SAILING FEDERATION.

INTERNATIONAL ENTERPRISE CLASS RULE No. 1

OBJECT OF THE CLASS RULES  
 This is a new design class. The Rules, Plans, and Specifications are framed to ensure that the hull form, weight, rigging, sail area, deck plan, the boats are as nearly alike as possible with variations in cockpit layout and fitting as alternatives on bows and stems. All boats must be built according to the plans and rules in all respects.

INTERNATIONAL ENTERPRISE	
CLASS	DESIGNER
INTERNATIONAL ENTERPRISE	JACK HILL
ONE FIFTH FULL SIZE (1:5)	SHEET 12
ONE DESIGN GINGHY G.P.P. 1 COMPLETION PLAN	