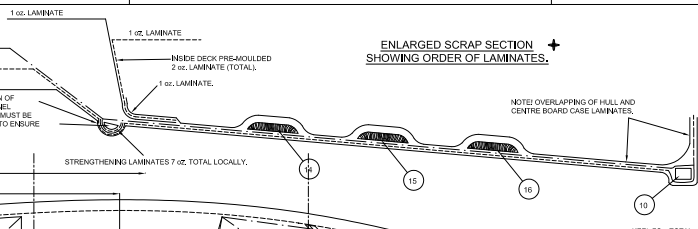
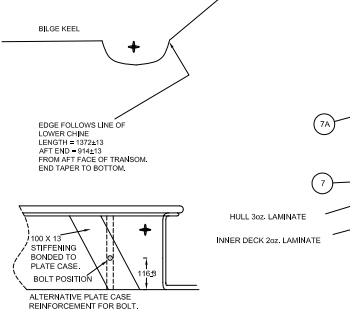
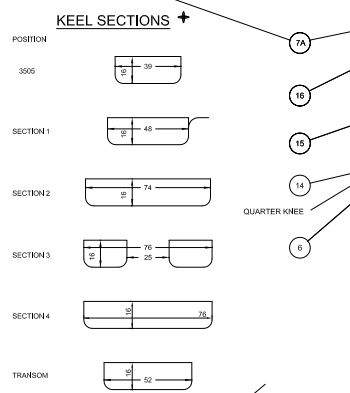
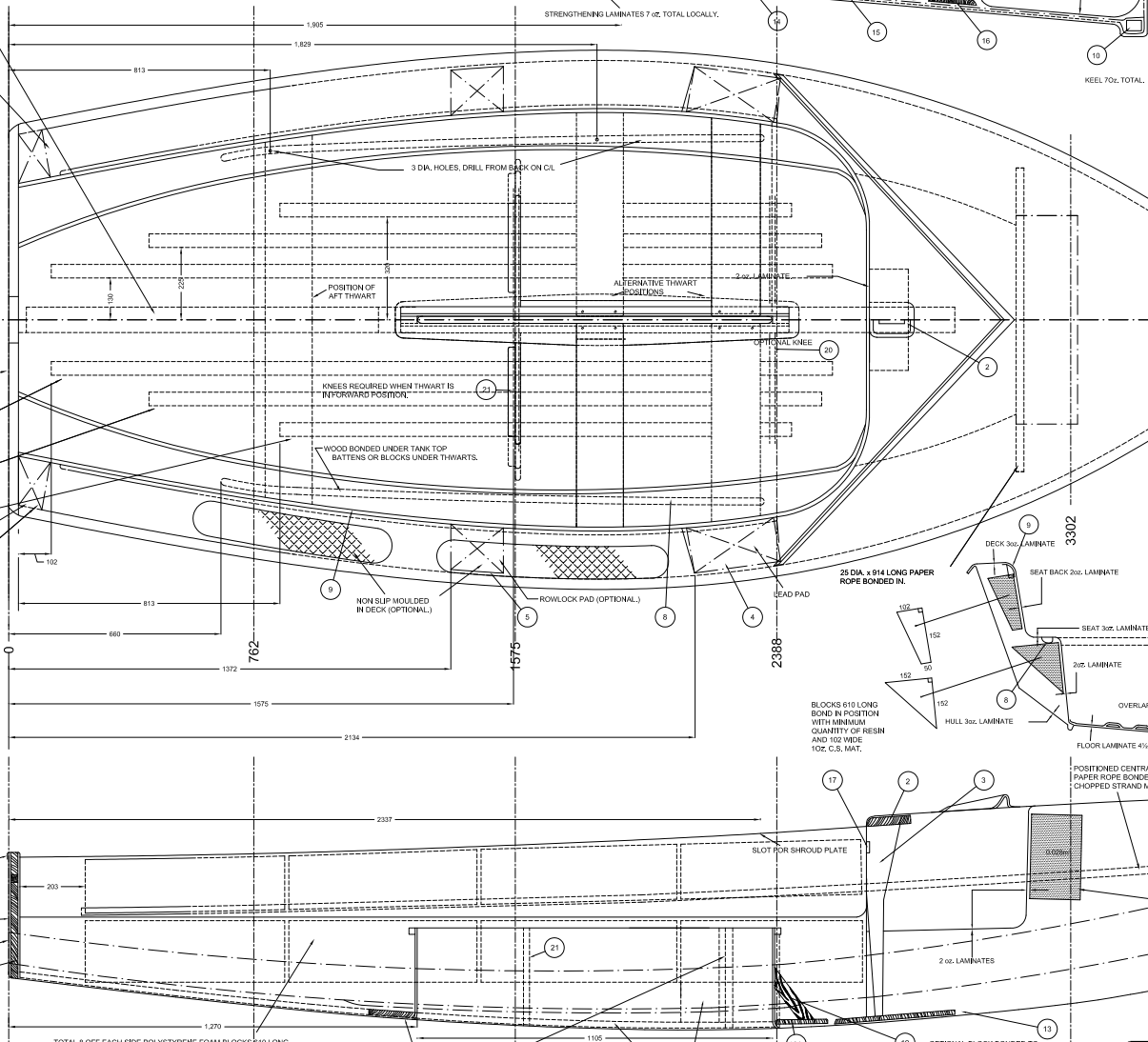
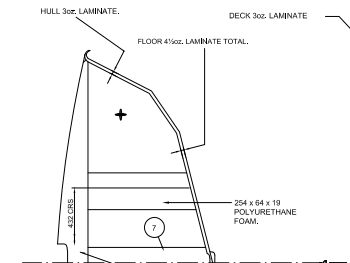


**ENLARGED SCRAP SECTION**  
**SHOWING ORDER OF LAMINATES.**



WOOD PARTS BONDED INTO HULL (must be of a durable timber).									
1	1	STEP HEAD BLOCK	150 x 76 x 48						
1A	1	"	152 x 54 x 29						
2	1	MAST STEP BASE	127 x 127 x 27						
3	1	KING POST	597 x 89 x 28						
4	2	SHEET LEAD PADS	305 x 105 x 22						
5	2	ROWLOCK PADS	152 x 105 x 22 (OPTIONAL)						
6	2	QUARTER KNEES	102 x 105 x 3						
7	1	CENTRE TRANSOM	295 x 92 x 25 TAPERED TO 21 AT TOP						
7A	1	TOP TRANSOM	1105 x 79 x 21 TAPERED TO 19 AT TOP EDGE						
8	2	SEAT FIXING BATTENS	1127 x 38 x 22 (OR BLOCKS)						
9	2	HANDRAIL FIXING	24.38 x 35 x 16						
10	2	BOTTOM OF PLATE CASE	1422 x 19 x 16						
10A	2	END OF CASE	152 x 32 x 16						
11	2	TOP OF PLATE CASE	114.3 x 35 x 19 (OMITTED ON MORE RECENT BOATS)						
12	2	TOP OF CASE ENDS	32 x 35 x 19						
13	1	KING POST STEP	305 x 84 x 10						
14	2	FLOOR BATTENS	1600 x 4.4 x 10						
15	2	"	2083 x 4.4 x 10						
16	2	"	102 x 102 x 22						
17	1	CLEAT BLOCK	305 x 127 x 13 (OPTIONAL)						
18	2	CASE REINF	"						
19	1	WINCH BLOCK	"						
20	1	PLATE CASE KNEE	SEE SHEET 4) BONDED TO HULL TO						
21	2	PLATE CASE KNEES	SEE SHEET 5) SUIT G.R.P. CONSTRUCTION.						



**DO NOT SCALE**

THE DIMENSIONAL ACCURACY OF THIS PRINT MAY VARY DUE TO ATMOSPHERIC CONDITIONS AND REPRODUCTION METHODS. IT IS RECOMMENDED THAT FORMERS ARE CHECKED AGAINST THE MEASUREMENT FORM BEFORE COMMENCING CONSTRUCTION.

G.R.P. CONSTRUCTION OF HULL. ALL MATERIALS APPROVED BY LLOYDS FOR BOAT CONSTRUCTION. REINFORCING TO CHINES BY BANDS OF 1 1/2 Oz. C.S.Mk. 102, 1 1/2 Oz. 202, RESIN CONTENT: C.S.M. Mk 21, Mk 2 1/2:1 LAMINATE WEIGHT CONVERSION:- HULL TO BE OF EVEN LAY UP EXCEPT FOR LOCAL 50mm OVERLAPS AND STIFFENING, 102-R required = 300gm required.

TOTAL 8 OFF EACH SIDE POLYSTYRENE FOAM BLOCKS 110 LONG BOND IN POSITION WITH MIN. QUANTITY OF RESIN AND 102 WIDE 1oz. C.S. MAT.  
GROOVES INSIDE PLATE CASE FOR STIRRUP 76x3 approx. CENTRE 2222 FROM AFT FACE OF TRANSOM.  
STIFFENING BONDED TO PLATE CASE (OPTIONAL).

Where this symbol is shown the drawing associated with it is a sketch and therefore is NOT to scale (N.T.S.)

INTERNATIONAL ENTERPRISE CLASS RULE No.1  
OBJECT OF THE CLASS RULES  
This is a one design class. The Rules, Plans, and Specifications are framed to ensure that the hull form, weight, rigging, sail area, deck plan, the boats are as nearly alike as possible with variations in cockpit layout and fittings as alternatives on bows and stern. All boats shall be built according to the plans and rules in all respects.

NO.	DESCRIPTION	REV.	DATE	BY	CHKD.

INTERNATIONAL SAILING FEDERATION  
ARMORING HOUSE, TOWN QUAY, 309 THAMESTON 2014 2AD  
INTERNATIONAL ENTERPRISE  
Designer - Jack Hill

ONE: FIFTH FULL SIZE (1:5)  
ONE: DESIGN DINGHY. DETAILS OF G.R.P. HULL.

SHEET 11